



Challenge. Create. Connect.

Purpose:

Colby Community College is currently seeking competitive sealed bids to replace existing doors with ADA Accessible and Compliant doors.

Overview:

This project will encompass seven (7) different buildings and fifteen (15) doors in total (this figure reflects double doors counting as two doors). All bids must meet the standards put forth in the 2010 ADA Standards for Accessible Design found here:

<https://www.ada.gov/regs2010/2010ADASTandards/2010ADASTandards.htm>. It is the responsibility of the selected vendor to ensure compliance with these standards. Additional standards/descriptions are included at the end of this RFP.

The proposed areas for door replacement are as follows:

Building Name	Entrance(s)/Type of Doors	Total Doors
Bedker Memorial Complex	West Facing Single Doors (2) (One interior, one exterior door)	Two (2) Single Doors
Cultural Arts Center (South side of Frahm Theater)	West Facing Double Doors (2) (One interior, one exterior door)	Two (2) Double Doors
Frahm Theater Main Entrance	West Facing Double Doors (2) The door on the north end and the door on the south end should both be ADA accessible, but the entire entrance area will be replaced.	Two (2) Double Doors
Health Sciences	North Facing Double Doors (2) (One interior, one exterior door)	Two (2) Double Doors
Robert Burnett Memorial Student Union	West Facing Double Doors (2) (One interior, one exterior door) East Facing Double Doors (1)	Three (3) Double Doors
Stanley Carr Agriculture and Vet Nursing Building	South Facing Double Doors (2) (One interior, one exterior door)	Two (2) Double Doors
Swimming Pool Area	South Facing Single Door (1) Interior Single Door (1)	One (1) Exterior Door One (1) Interior Door

Project Timeline:

Bids must be received by noon on Friday, October 8, 2021, to be considered. Please provide an estimate of when the project will be completed with your bid, but must be completed no later than June 30, 2022.

Exclusions:

Any project exclusions or any portion of the bid that cannot be completed must be disclosed in an area labeled exclusions.

Mandatory Disclosures:

The selected vendor is responsible for obtaining their own building permit and insurance.

Vendor Responsibilities:

- Vendor must provide a detailed overview of the warranty of product and workmanship of the areas.
- Vendor must provide an electronic access button that enables the door(s) to open with a push of the button.
- Vendor is responsible for ensuring ADA accessibility and compliance is strictly adhered to.
- Vendor is responsible for the removal and disposal of the original doors.
- Vendor is responsible for a final prep of the area (this includes cleaning the doors, glass, and ensuring all work areas are clean and uniform).
- Vendor is responsible for installing the locks that CCC selects
- Vendor is responsible for a detailed description of the electronic device used to open the doors.
- Vendor is responsible for providing a detailed description of the door(s) (make, model, etc.) that ensure the institution is receiving a quality product that will last.
- If an electrician is needed for additional wiring, it is the vendor's responsibility to contract an electrician or any other applicable contractor. The expense should be included in vendor's bid.

All applicable workman's compensation, liability, and builders risk insurance need to be are required. All applicable sales tax must be included in the final bid. Vendors are required to physically look at the project site. Please coordinate these activities with Justin Villmer, 785.460.5407 or e-mail him directly at justin.villmer@colbycc.edu. Any questions can also be directed to the aforementioned contact provided.

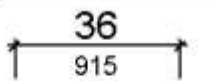
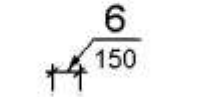
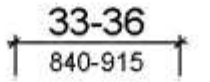



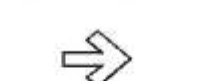



All sealed bids need to be finalized and turned in Friday, October 8, 2021, by 12:00 PM (noon) to Thomas Hall (CCC's Main Campus), attention: Justin Villmer. These bids will be opened by the Vice President of Business Affairs, Vice President of Student Affairs, and one staff member.

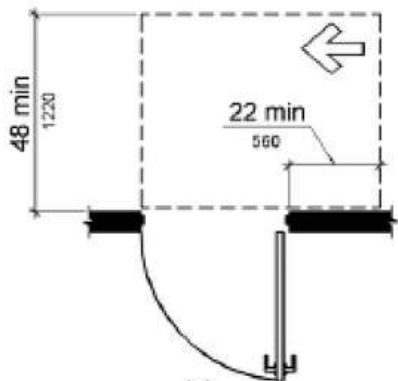
Award Date: The Board meeting will be held on Monday, October 18, 2021, to select a vendor. The selected vendor will be notified after approval has been received from the Board of Trustees.

Contact Information: Please direct questions or bids to justin.villmer@colbycc.edu or contact directly at (785) 460-5407.

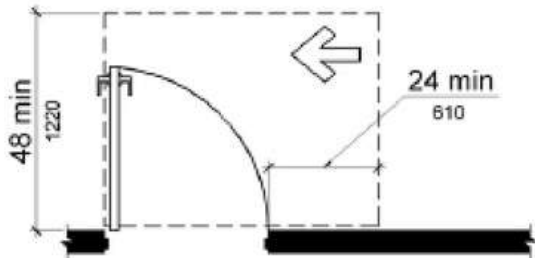
Statement of Disclosure: The board reserves the right to reject any or all bids, to accept that bid which appears to be in the best interest of the college, to waive any informalities in any part of any bid, and to reject any or all bids received after the date and time specified. Any bid may be withdrawn prior to the scheduled time for the opening of bids. The bidder to whom the award is made may be required to enter into a written contract with the college and provide a performance or public works bond as required by law or the Board of Trustees (where applicable).

Additional Information:

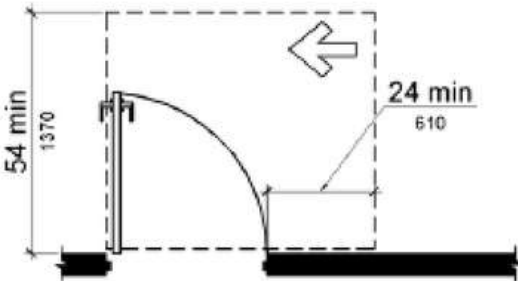
Convention	Description
	dimension showing English units (in inches unless otherwise specified) above the line and SI units (in millimeters unless otherwise specified) below the line
	dimension for small measurements
	dimension showing a range with minimum - maximum
min	minimum
max	maximum
>	greater than
≥	greater than or equal to
<	less than
≤	less than or equal to
	boundary of clear floor space or maneuvering clearance
	centerline
	a permitted element or its extension
	direction of travel or approach
	a wall, floor, ceiling or other element cut in section or plan
	a highlighted element in elevation or plan
	location zone of element, control or feature



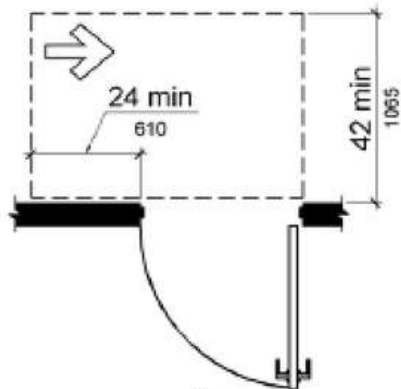
(g) hinge approach, push side, door provided with both closer and latch



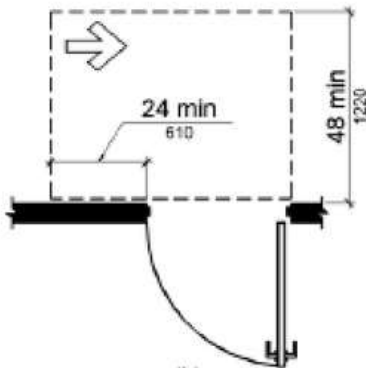
(h) latch approach, pull side



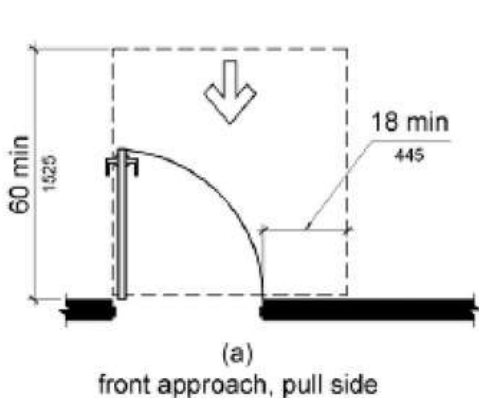
(i) latch approach, pull side, door provided with closer



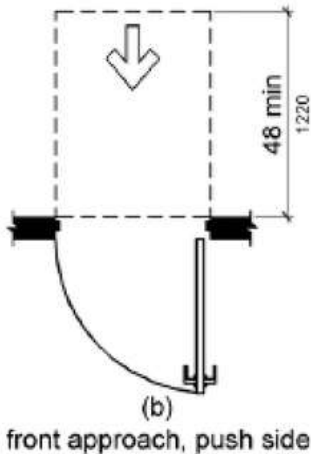
(j) latch approach, push side



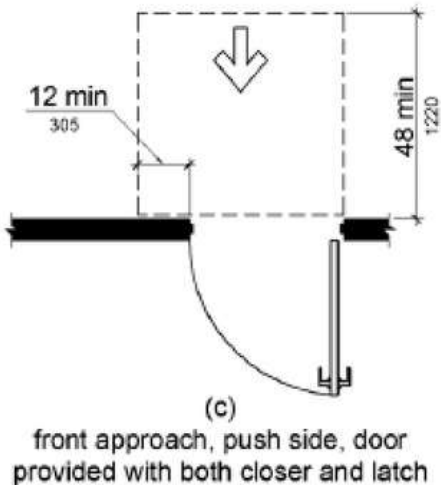
(k) latch approach, push side, door provided with closer



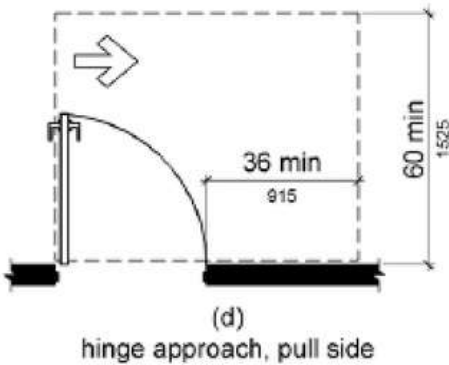
(a) front approach, pull side



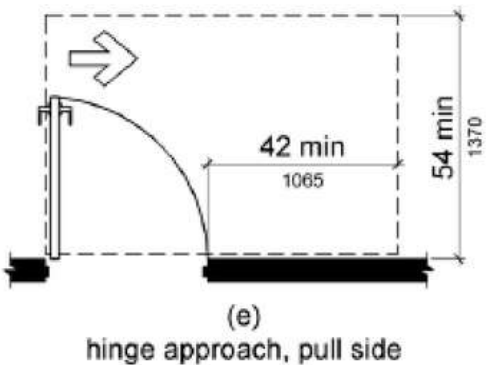
(b) front approach, push side



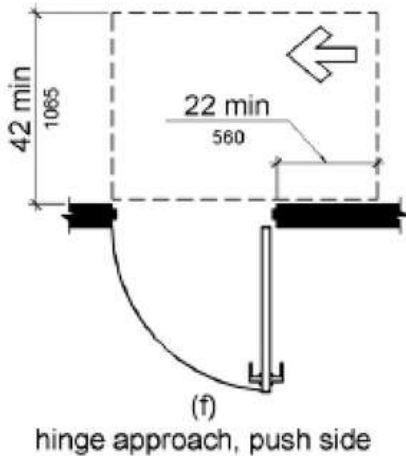
(c) front approach, push side, door provided with both closer and latch



(d) hinge approach, pull side



(e) hinge approach, pull side



(f) hinge approach, push side